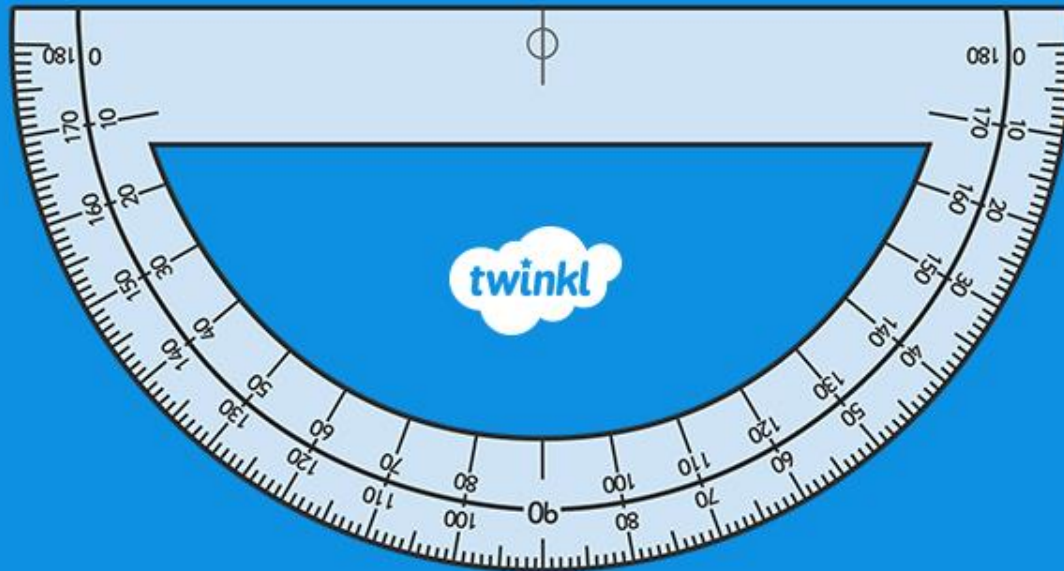
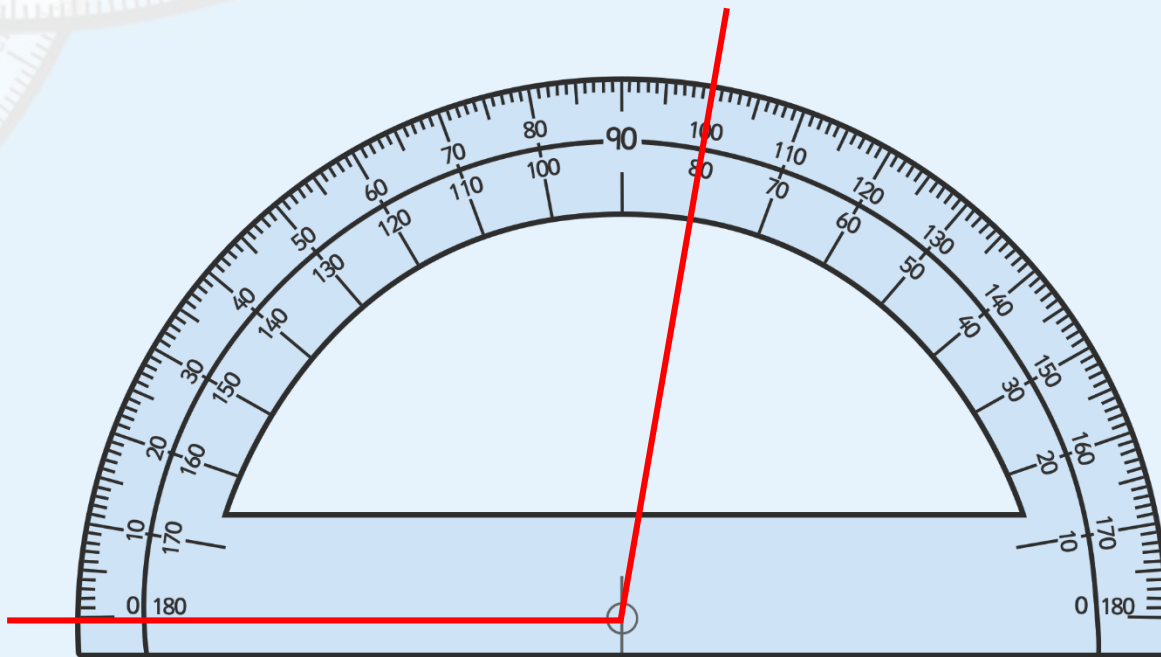


# How to use a Protractor



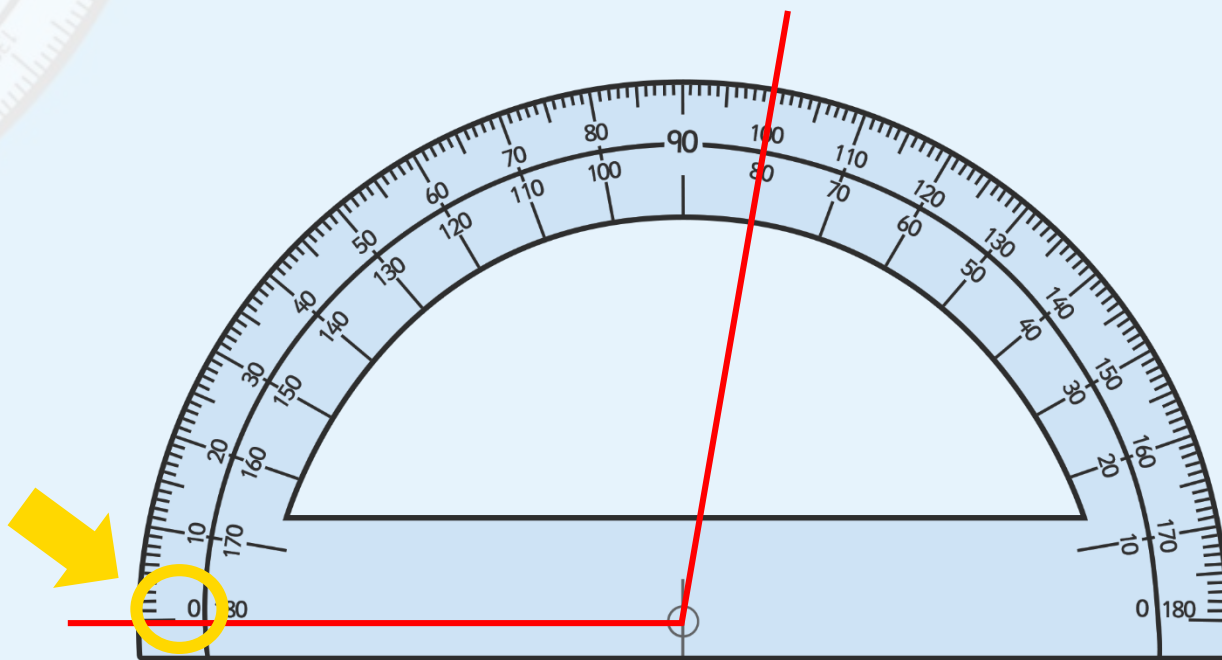
# 1

Place the cross or circle at the point (vertex) of the angle that you are measuring.



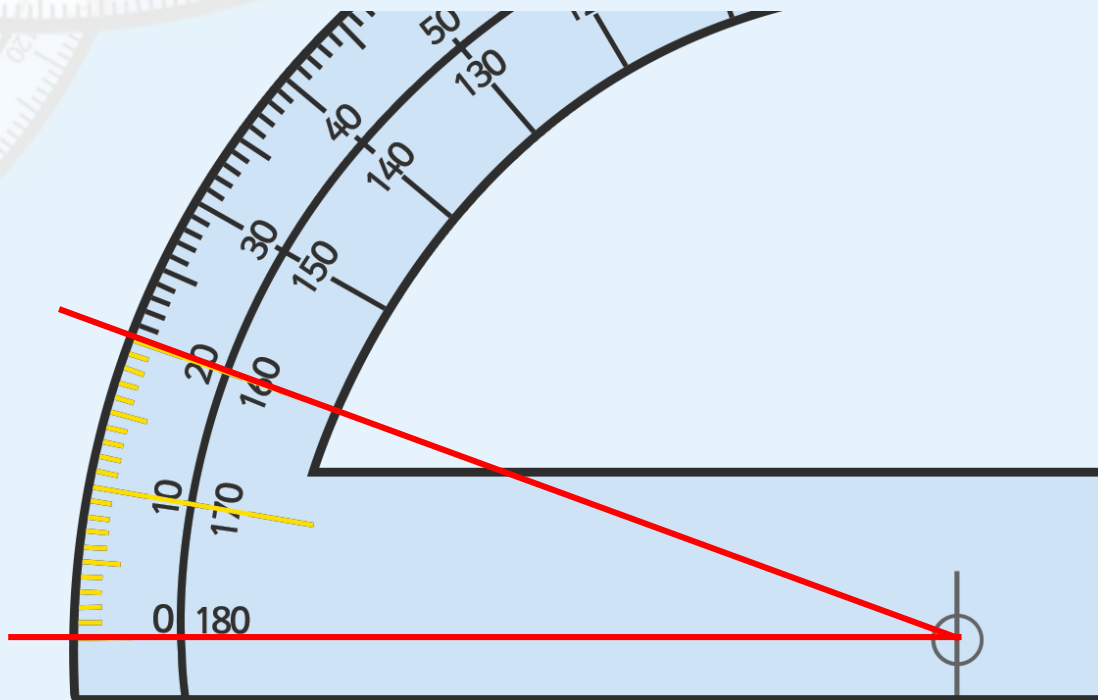
# 2

Read from the zero on the outer scale of your protractor.



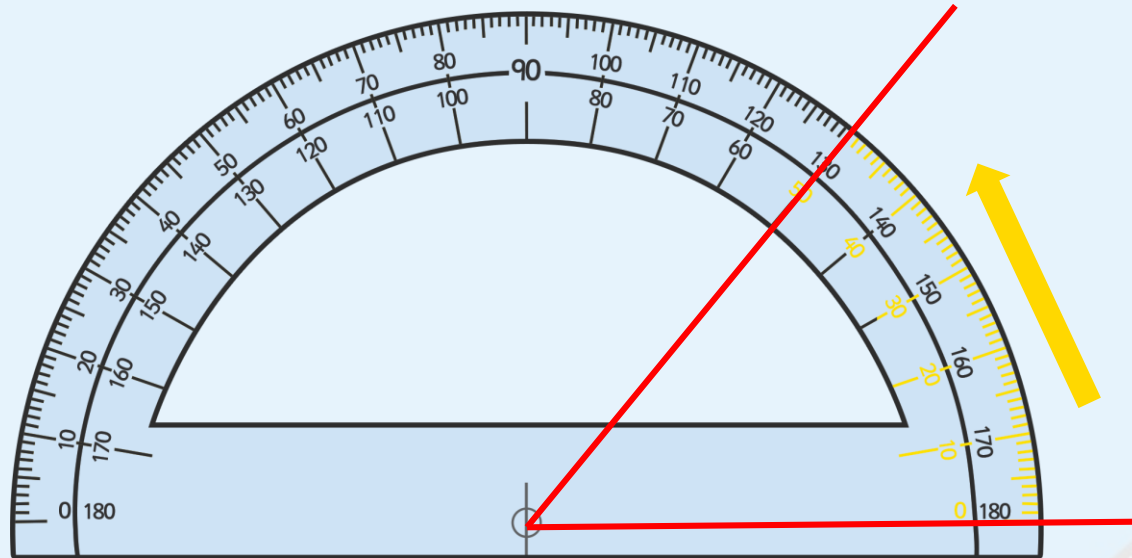
# 3

Count the degree lines carefully.



# 4

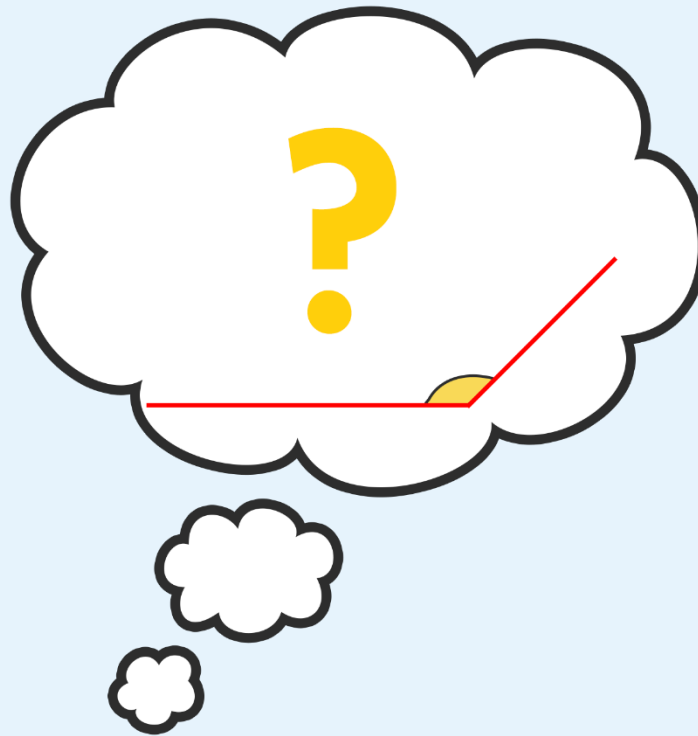
If the angle that you are measuring turns in an anti-clockwise direction, you will need to use the inner scale of your protractor.





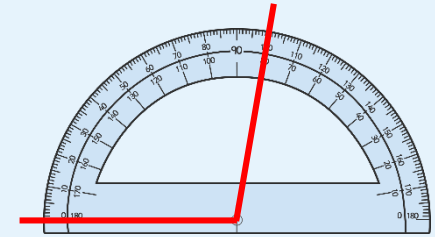
**Tip!**

It is a good idea to estimate the angle before measuring.



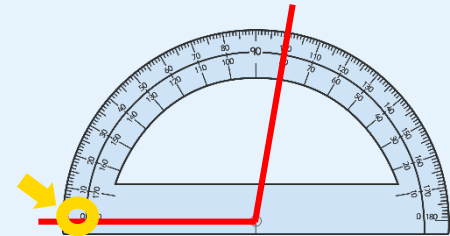
# 1

Place the cross or circle at the point (vertex) of the angle that you are measuring.



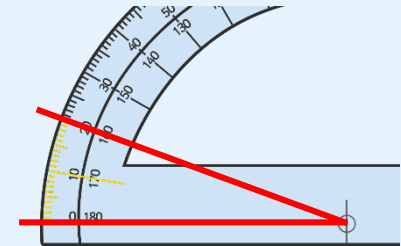
# 2

Read from the zero on the outer scale of your protractor.



# 3

Count the degree lines carefully.



# 4

Use the inner scale of your protractor if the angle turns in an anti-clockwise direction..

